



**MULTI**

# Ultra Heat Multi Zone Outdoor Unit

**Model:  
KM48UH50**



Item	Unit	Specification
Model	—	KM48UH50
Rated Cooling Capacity	W	14000
	Btu/h	48,000
Rated Heating Capacity (47°F)	W	15800
	Btu/h	54,000
Rated Heating Capacity (17°F)	W	15,800
	Btu/h	54000
Cooling Capacity Range	W	1,000-16,000
	Btu/h	3412-54592
Heating Capacity Range (47°F)	W	1,200-17,400
	Btu/h	4,094-59,369
Max Heating Capacity (17°F)	W	15800
	Btu/h	54000
Cooling Power Input (Max)	W	54,000
Heating Power Input (Max)	W	4,450
SEER	—	18
HSPF	—	10
EER	W/W	2.59
COP	W/W	3.55
Cooling Operation Range	°F(°C)	50~129 (10~54)
Heating Operation Range	°F(°C)	-31~81 (-35~24)
Power Supply	—	208/230V / 1Ph / 60Hz
Min/Max Voltage	V	187/253
Main Supply Wire Size	—	3x6.0mm <sup>2</sup>
Interconnecting Cable Wire Size	—	2x1.5mm <sup>2</sup>
MCA	A	39
MOCP/Breaker Size	A	60
Compressor Type	—	DC Inverter Rotary
Compressor RLA	A	28
Fan Motor Power Output	W	120
Fan Motor FLA	A	1.0Ax2
Fan Motor Air Flow (Max)	CFM	3531
Sound Pressure Level	dB(A)	56
Unit Dimensions (LxHxD)	mm	900x1345x340
	Inch	35-3/8x53x13-3/8
Weight (Net/Shipping)	kg	139/150
	lbs	307/331
Min Number of Indoor Units	—	2
Max Number of Indoor Units	—	7
Refrigerant Type	—	R410A
Connection Method	—	Flared
Factory Charge	oz	229.3
Additional Charge	oz/ft	0.5
Total Refrigerant Pipe Length	m	135
	ft.	442.9
MAX Refrigerant Length	m	70
	ft.	229.7
Min Refrigerant Pipe Length	m	20
	ft.	65.6
MAX Refrigerant Pipe Elevation between Indoor Units	m	15
	ft.	49.2
MAX Lift from Outdoor to Indoor Unit	m	30
	ft.	98.4
MAX Drop from Outdoor to Indoor Unit	m	30
	ft.	98.4

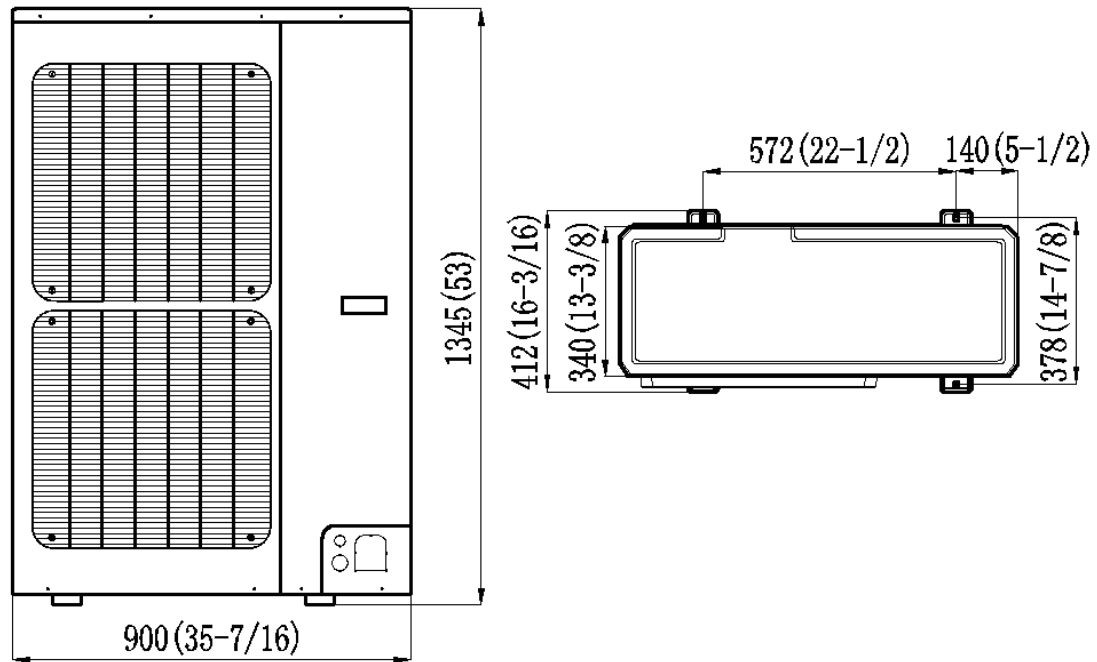
**Job Name:**

**Schedule Reference:**

**Date:**

Specification are subject to change without notice.

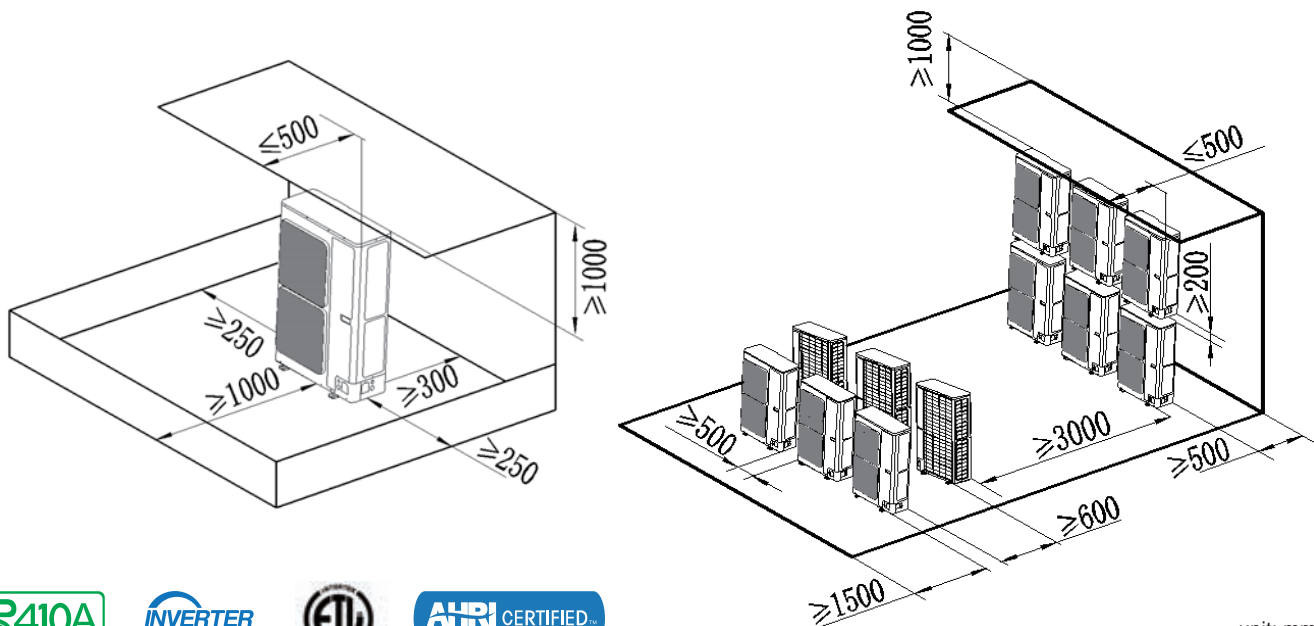
## Outline and Physical Dimensions of KM48UH50.



unit: mm/inch

Suction/Gas Line Port Size		Liquid Line Port Size	
Port #1	5/8 Inch (φ16) OD Flared	Port #1	3/8 Inch (φ9.52) OD Flared

## MINIMUM SPACING REQUIREMENTS



unit: mm





# OPERATIONAL PERFORMANCE SPECIFICATIONS

## EXTENDED RATINGS

MULTI48HP230V1CO

### COOLING PERFORMANCE

Outdoor air temp (°F DB)	Indoor air temp													
	57.2°F WB (14)		60.8°F WB (16)		64.4°F WB (18)		66.2°F WB (19)		68.0°F WB (20)		71.6°F WB (22)		75.2°F WB (24)	
	68.0°F DB(20)		73.4°F DB (23)		78.8°F DB (26)		80.6°F DB (27)		82.4°F DB (28)		86.0°F DB (30)		89.6°F DB (32)	
	TC	PI	TC	PI	TC	PI	TC	PI	TC	PI	TC	PI	TC	PI
50 (10)	35.7	2.89	42.5	2.89	49.4	3.21	52.8	3.37	56.2	3.54	60.5	3.68	61.9	3.60
53.6 (12)	35.7	2.92	42.5	2.93	49.4	3.25	52.8	3.42	56.2	3.59	59.8	3.67	61.0	3.59
57.2 (14)	35.7	2.94	42.5	2.96	49.4	3.29	52.8	3.46	56.2	3.63	59.0	3.67	60.3	3.58
60.8 (16)	35.7	2.97	42.5	2.99	49.4	3.33	52.8	3.50	56.2	3.68	58.3	3.69	59.5	3.71
64.4 (18)	35.7	3.00	42.5	3.03	49.4	3.37	52.8	3.57	56.2	3.80	57.4	3.82	58.8	3.84
68 (20)	35.7	3.02	42.5	3.06	49.4	3.50	52.8	3.74	55.4	3.93	56.7	3.95	57.9	3.97
69.8 (21)	35.7	3.04	42.5	3.12	49.4	3.59	52.8	3.84	55.0	3.99	56.2	4.01	57.6	4.03
73.4 (23)	35.7	3.11	42.5	3.26	49.4	3.76	52.8	4.03	54.2	4.11	55.5	4.14	56.7	4.17
77 (25)	35.7	3.22	42.5	3.40	49.4	3.94	52.8	4.23	53.5	4.24	54.7	4.27	56.1	4.29
80.6 (27)	35.7	3.33	42.5	3.55	49.4	4.13	51.9	4.36	52.6	4.37	54.0	4.40	55.2	4.43
84.2 (29)	35.7	3.46	42.5	3.71	49.4	4.33	51.3	4.49	51.9	4.50	53.1	4.53	54.5	4.56
87.8 (31)	35.7	3.59	42.5	3.88	49.4	4.54	50.4	4.61	51.1	4.63	52.5	4.66	53.7	4.69
91.4 (33)	35.7	3.72	42.5	4.05	49.0	4.72	49.7	4.74	50.4	4.76	51.6	4.79	53.0	4.83
95 (35)	35.7	3.86	42.5	4.24	48.3	4.85	48.9	4.87	49.5	4.89	50.7	4.92	52.1	4.96
98.6 (37)	35.7	4.01	42.5	4.44	48.0	4.98	48.2	5.00	48.7	5.02	50.1	5.06	51.3	5.09
102.2 (39)	35.7	4.17	42.5	4.65	48.0	5.11	48.0	5.13	48.0	5.15	49.2	5.19	50.6	5.23
105.8 (41)	33.7	4.48	40.4	5.03	45.9	5.80	48.0	5.46	48.0	5.48	48.3	5.52	49.7	5.56
111.2 (44)	31.4	4.74	38.3	5.37	43.8	6.31	44.5	6.01	45.2	5.81	46.5	5.74	47.9	5.79
116.6 (47)	29.6	5.81	37.0	6.65	42.3	6.57	42.9	6.08	43.6	6.11	44.9	6.08	46.4	6.13
122 (50)	27.1	5.73	33.2	6.55	37.8	6.67	38.3	6.49	38.9	6.44	40.1	6.42	41.7	6.35
129.2 (54)	20.5	5.07	24.7	5.79	28.3	6.02	28.8	6.01	29.7	5.92	32.0	5.86	33.9	5.71

### HEATING PERFORMANCE

Outdoor air temp (°F DB)	indoor air temperature °F DB												
	60.8 (16)		64.4 (18)		68 (20)		69.8 (21)		71.6 (22)		75.2 (24)		
	°F DB	°F WB	TC	PI	TC	PI	TC	PI	TC	PI	TC	PI	
-31 (-35)	-31.3	32.7	6.58	32.3	6.38	32	6.2	32	6.26	31.8	6.12	31.8	6.01
-25.6 (-32)	-25.9	35.2	6.62	34.8	6.42	34.5	6.24	34.3	6.3	34.1	6.16	34.1	6.05
-20.2 (-29)	-20.4	37.9	6.67	37.5	6.47	37.2	6.29	37.2	6.35	37	6.21	37	6.1
-16.6 (-27)	-16.8	41.5	6.73	41.1	6.53	40.8	6.35	40.8	6.41	40.6	6.27	40.6	6.16
-13 (-25)	-13.3	42.7	6.81	42.3	6.61	42	6.43	42	6.49	41.8	6.35	41.8	6.24
-7.6 (-22)	-8	46	6.93	45.6	6.73	45.3	6.55	45.3	6.61	45.1	6.47	45.1	6.36
-3.64 (-20)	-4.0	48.7	6.98	48.3	6.78	48.0	6.60	47.8	6.66	47.6	6.52	47.6	6.41
-1.84 (-19)	-2.2	49.5	6.99	49.1	6.79	48.8	6.61	48.8	6.67	48.6	6.53	48.6	6.42
1.94 (-17)	1.4	50.0	7.01	49.6	6.81	49.3	6.63	49.3	6.69	49.1	6.55	49.1	6.44
7.34 (-14)	5.0	51.7	7.03	51.3	6.83	51.0	6.65	51.0	6.71	50.8	6.57	50.8	6.46
10.76 (-12)	8.6	52.3	6.98	51.9	6.78	51.6	6.60	51.6	6.66	51.4	6.52	51.4	6.41
14.36 (-10)	12.2	53.2	6.93	52.8	6.73	52.5	6.55	52.5	6.61	52.3	6.47	52.3	6.36
14.9 (-9.5)	14.0	53.7	6.87	53.3	6.67	53.0	6.49	53.0	6.55	52.8	6.41	52.8	6.30
16.7 (-8.5)	15.6	54.4	6.88	54.0	6.68	53.7	6.50	53.7	6.56	53.5	6.42	53.5	6.31
19.4 (-7)	18.3	55.7	6.78	55.3	6.58	55.0	6.40	54.7	6.46	54.5	6.32	54.5	6.21
23 (-5)	21.9	57.0	6.71	56.6	6.51	56.3	6.33	56.3	6.39	56.1	6.25	56.1	6.14
26.6 (-3)	25.3	58.5	6.68	58.1	6.48	57.8	6.30	57.8	6.36	57.6	6.22	57.6	6.11
32 (0)	30.7	59.7	6.68	59.3	6.48	59.0	6.30	59.0	6.36	58.8	6.22	58.8	6.11
37.4 (3)	36.0	60.9	6.60	60.5	6.40	60.2	6.22	60.2	6.28	59.8	6.14	59.8	6.03
41 (5)	39.4	61.7	6.51	61.3	6.31	61.0	6.13	61.0	6.19	60.2	6.05	60.0	5.94
44.6 (7)	42.8	62.7	6.38	62.3	6.18	62.0	6.00	61.6	6.06	61.0	5.90	61.6	5.79
48.2 (9)	46.2	63.3	6.30	63.5	6.10	64.3	5.92	62.1	6.00	58.8	5.84	56.0	5.69
51.8 (11)	49.6	66.0	6.18	65.2	5.98	64.3	5.80	62.1	5.73	58.8	5.57	56.0	5.42
55.4 (13)	53.2	69.5	5.99	65.2	5.79	64.3	5.61	62.1	5.50	58.8	5.34	56.0	5.19
59 (15)	56.7	69.5	5.74	65.2	5.54	64.3	5.36	62.1	5.25	58.8	5.09	56.0	4.94
64.4 (18)	62.2	69.5	5.04	65.2	4.84	64.3	4.66	62.1	4.55	58.8	4.39	56.0	4.24
68 (20)	65.3	69.5	4.68	65.2	4.48	64.3	4.30	62.1	4.19	58.8	4.03	56.0	3.88
75.2 (24)	68.9	69.5	4.41	65.2	4.21	64.3	4.03	62.1	3.92	58.8	3.76	56.0	3.61

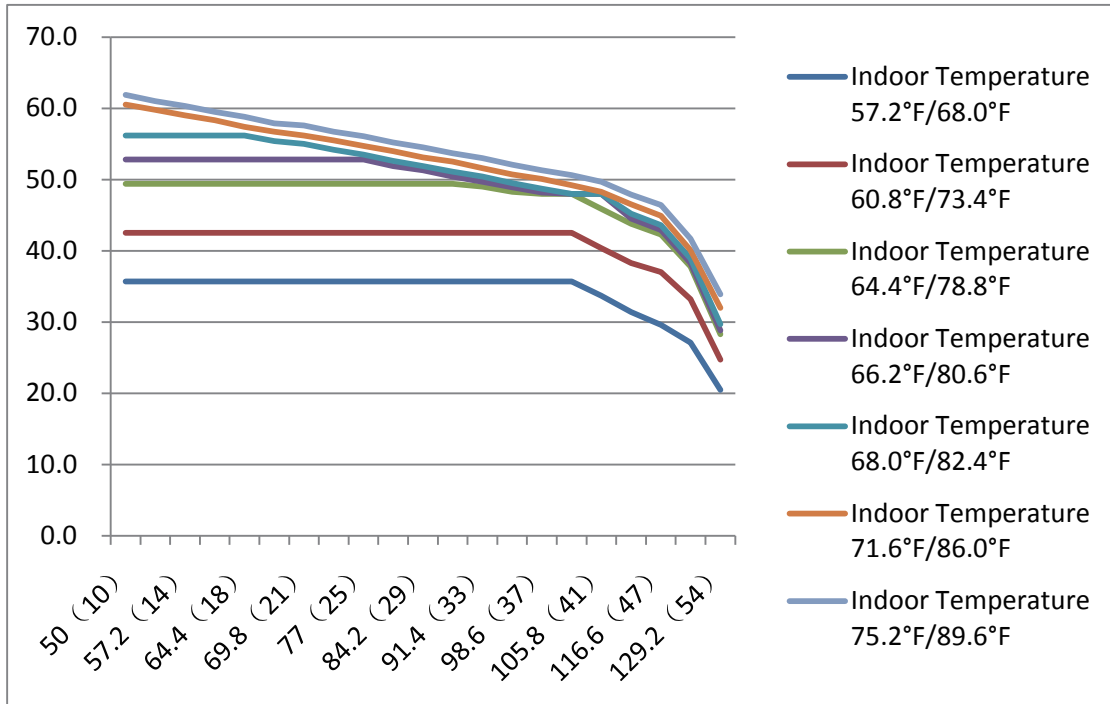
LEGEND

DB --- Dry Bulb  
WB --- Wet Bulb  
TC --- Total Net Cooling Capacity (Btu/h)  
SC --- Sensible Capacity (Btu/h)  
Input Power---(Watts)

Specifications are subject to change without notice. Manufacturer reserves the right to discontinue or modify specifications or designs without notice or without incurring obligations. All rights reserved.



### Cooling Capacity (Btu)



### Heating Capacity (Btu)

